

# PHOSPHORUS – COPPER

## Master Alloy Product Data Sheet

### Application :

Phos-Copper is extensively used in Non-Ferrous Industry for introducing Phosphorus in the alloy compositions, deoxidization and refining of alloys, Premier Phos-Copper is a homogenized alloy manufactured from high purity raw materials of international standards ensuring consistent Phosphorus pick-up.

Typical Application includes Brazing Alloys, Welding Electrodes, Phosphor Bronze, Refining of Hypereutectic Aluminium Silicon Alloys, Deoxidized Copper and Copper Alloys.

### Protectives :

Suitable clothing (e.g. gloves) and respiratory device. Preventive personal hygiene such as e.g. protective creams to prevent skin irritation or ulceration of the nasal septum.

### Forms :

In ingots of about 8.0 kgs. unit weight having dimensions 285 x 185 x 30 mm approx. as granules, 2 to 8 mm powder size as per request.

### Hygienic Aspects :

Due to the high P content, care must be taken in handling the alloy.

The dust, vapour or fumes of P are toxic and may cause irritation of skin if proper precautions are not observed.

The threshold limit value of P is 0.1 mg/m<sup>3</sup> (OSHA)

### Storage :

The alloy must be stored under dry conditions in a well ventilated area and must be kept away from flames and other heat sources.

### Packing :

50 Kgs Corrugated Box, 500 Kgs. Steel Drum, 100 Kgs steel drum for Granules.

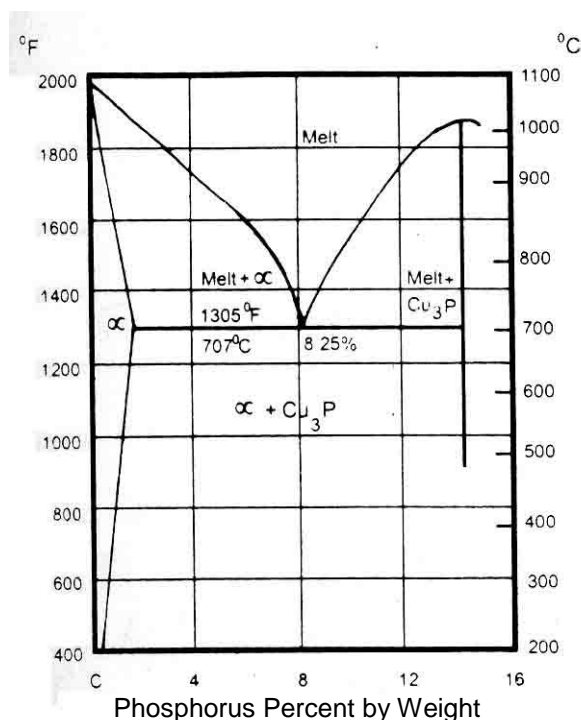
### Composition :

P 13 to 15%, Cu : Balance	P 9 to 11%, Cu : Balance	P 7.5 to 8.5% Cu : Balance
------------------------------	-----------------------------	-------------------------------

### Impurities :

Fe	: 0.20 % Max
Mn	: 0.10 % Max
Ni	: 0.10 % Max
Zn	: 0.10 % Max
Sb	: 0.10 % Max
Pb	: 0.05 % Max
Sn	: 0.05 % Max

Other impurities each max 0.05%.



- Other composition available on demand.
- Alloy melting point 1020°C